

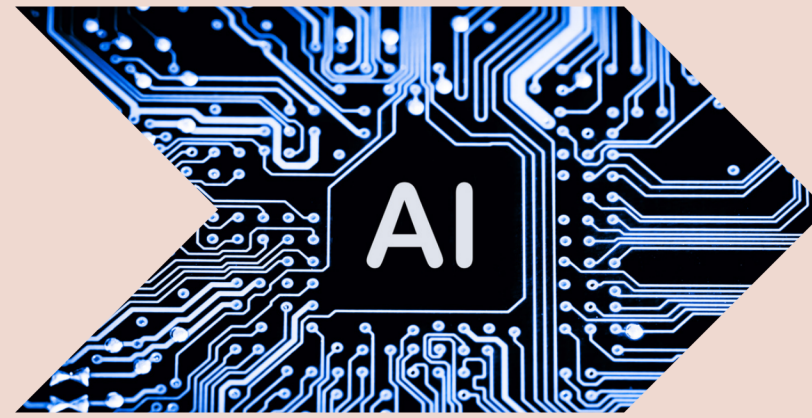
EMBRACING THE FUTURE WITH AI TECHNOLOGY

AI at TTUSD



I acknowledge the use of gemini.google.com to consolidate ideas and assist in brainstorming. The output from these prompts was used to assist in organising the presented ideas and clarifying the message.

OUTCOMES



WHAT IS AI?



AI IN EDUCATION



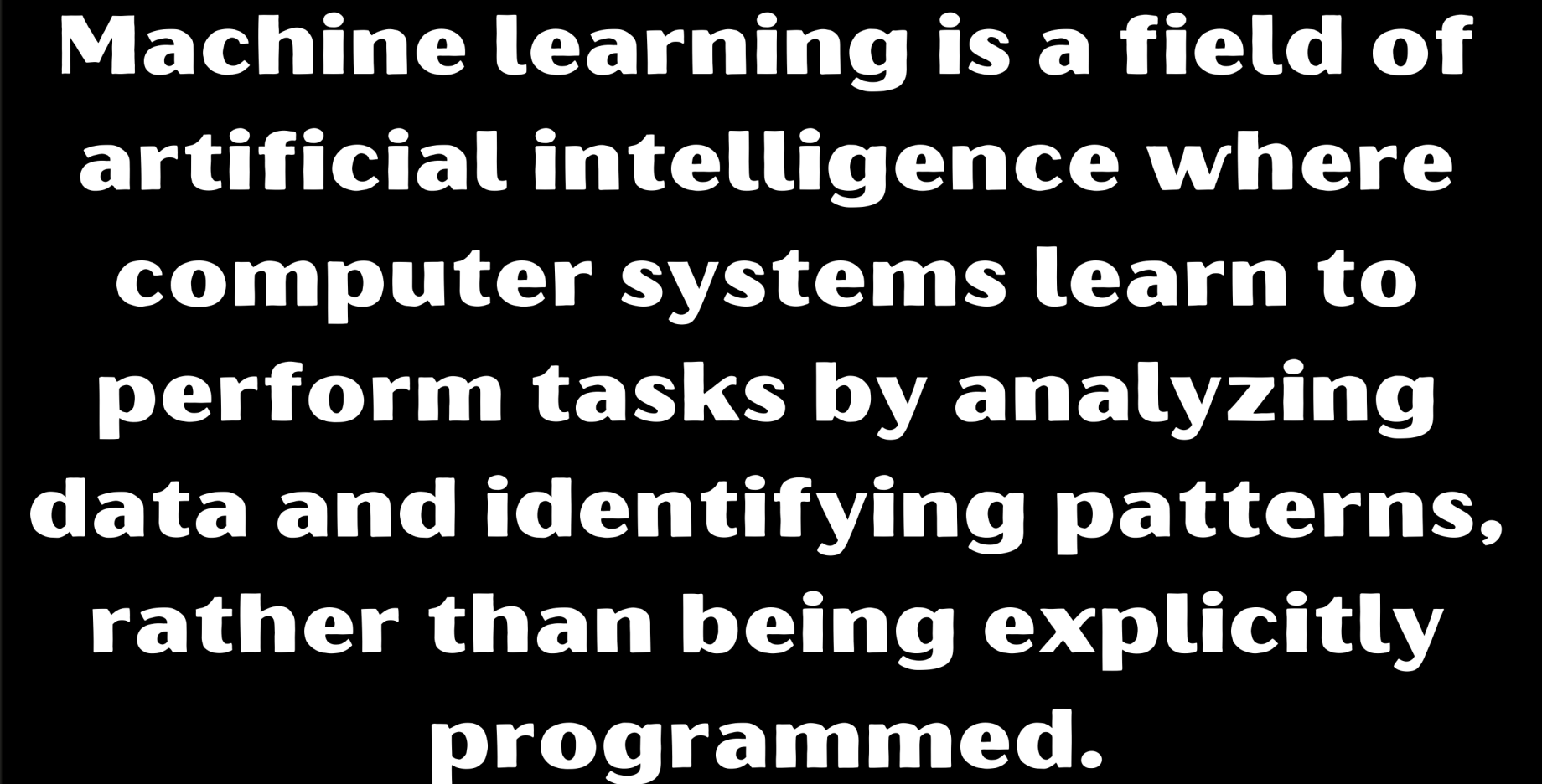
USING AI SAFELY AND EFFECTIVELY

Historical Context





**AI is designed to
mimic natural
intelligence.**



**Machine learning is a field of
artificial intelligence where
computer systems learn to
perform tasks by analyzing
data and identifying patterns,
rather than being explicitly
programmed.**

How is AI being used in Education today.

Student

- Creating beginning to essays or stories
- Summarizing and help with conclusions
- Editing papers for clarity, tone, audience
- Math Tutor(Khan Academy)
- Brainstorming ideas
- Simplifying complex text/ideas.
- Helping them write/complete computer code



How is AI being used in Education today.



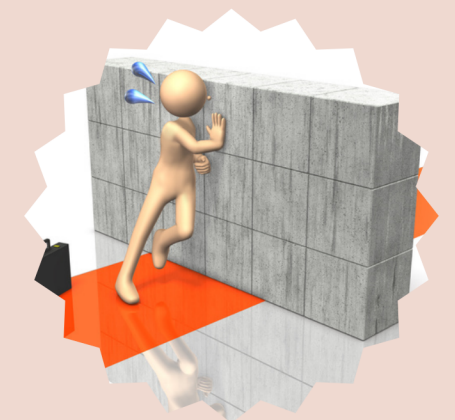
Staff

- Generating lesson plans ideas
- Creating exemplar work using a rubric
- Simplifying text/ideas
- Differentiating reading text
- Creating quizzes
- Brainstorming
- Clarifying emails
- Help writing code and spreadsheet formulas
- Support in grading student work

Benefits



- Improving equity
- Saving time
- Motivating users
- Developing critical thinking skills.
- Scaffolding
- Support
- Remove Obstacles

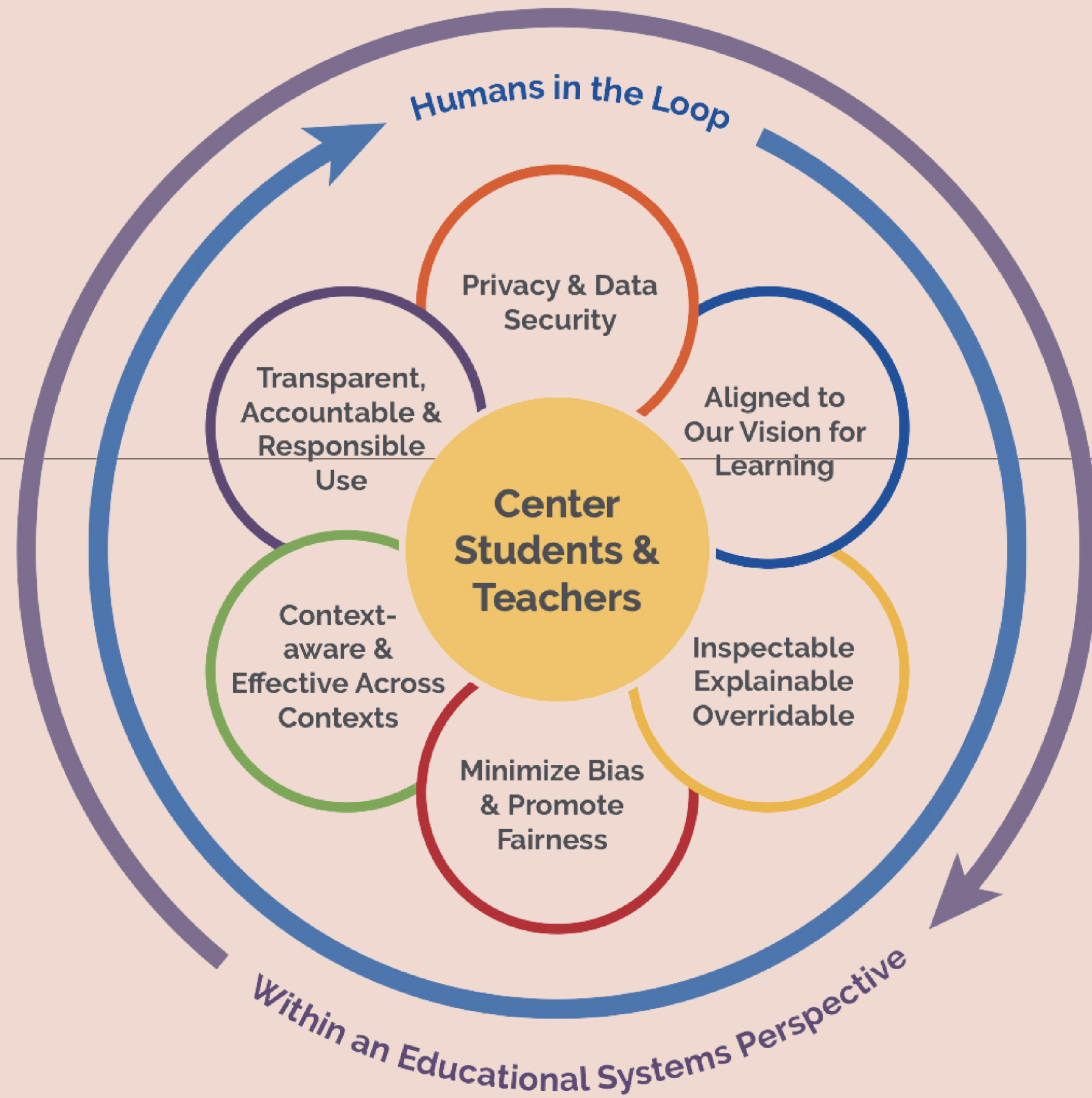


Risks



- Hallucination
- Critical thinking
- Bias.
- Cheating/Plagiarism
- Data privacy
- Content Safety

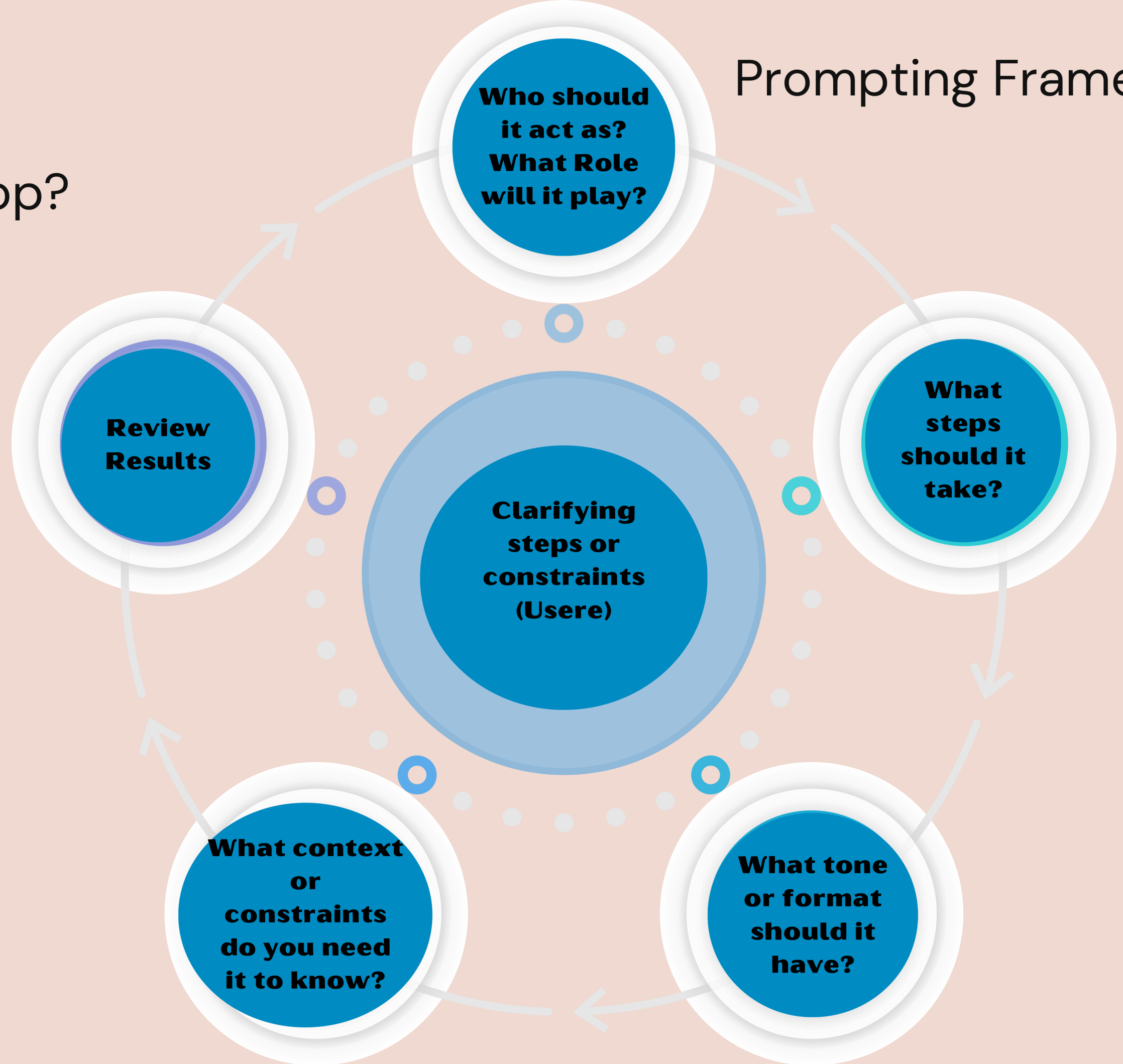




Keep the user in the center

Prompting Framework

How do we stay in the loop?



Continuum of AI Support

Student plugged prompt into AI, copied response and submitted it to teacher

AI created a response. Student read, edited, adjusted, and submitted.

Student created multiple AI responses, used the best parts, edited, edited, and submitted.

Student consulted internet/AI for ideas, then wrote and submitted

Student wrote all assignments content without consulting AI or the internet

AI-generated

Human-generated



Continuum of Non-Student Support

Student Asked a parent, tutor, friend to do the work and submitted it to teacher

A parent, tutor, friend created a response. Student read, edited, adjusted, and submitted.

Student multiple people for feedback on their response, used the best parts, edited, and submitted.

Student consulted a parent, tutor, friend for ideas, then wrote and submitted

Student wrote all assignments content without consulting AI or the internet



NonStudent-generated

Student-generated

Equity

Every kid has a Specialist, New York Times editor and a
Personal Tutor at home

Citing AI Use

I acknowledge the use of [insert AI system(s) and link] to [specific use of generative artificial intelligence]. The prompts used include [list of prompts]. The output from these prompts was used to [explain use].



"Pointillist painting of a sheep in a sunny field of blue flowers" prompt, DALL-E, AI 8 Mar. 2023, labs.openai.com/.

...prompted with "Is the left brain right brain divide real or a metaphor?" the chatGPT-generated text indicated that although the two brain hemispheres are somewhat specialized, "the notation that people can be characterized as 'left-brained' or 'right-brained' is considered to be an oversimplification and a popular myth" (OpenAI, 2023).

Reference

OpenAI. (2023). ChatGPT (Mar 14 version) [Large language model]. <https://chat.openai.com/chat>

- [APA style](#)
- [MLA style](#)

AI Usage Guidelines

- AI is a tool
- AI should not replace human judgement
- AI use should Align with Work Goals
- AI can be biased
- AI can Hallucinate
- AI platforms will be vetted
- AI use should promote fairness, inclusivity and diversity
- Never provide identifying data
- Cite the use of AI

Using Gemini (Googles AI)

In order to use Gemini with your TTUSD account

1. Users must complete a form and agree to the policies

- a. Users must agree not to use student/family information in their data shared with the AI
- b. Acknowledge that responses from AI can be biased and contain incorrect information
- c. Acknowledge the use of AI in their work.
- d. AI is used as a tool to enhance teaching not replace it.

2. Share their experience and responses and [Chats with other District Gemini Users](#)

[Form to agree to policies](#) (*Accounts will become active within 24 business hours*)

<https://gemini.google.com/app>

**Thank you for
exploring the AI
future!**

