

TTUSD
Instructional Leadership Team
PLC
2021-2022

Wednesday, September 15, 2021



Overview

- Context
- Improvement
- Opportunities

The promise of democracy is a fair chance
at a good life.

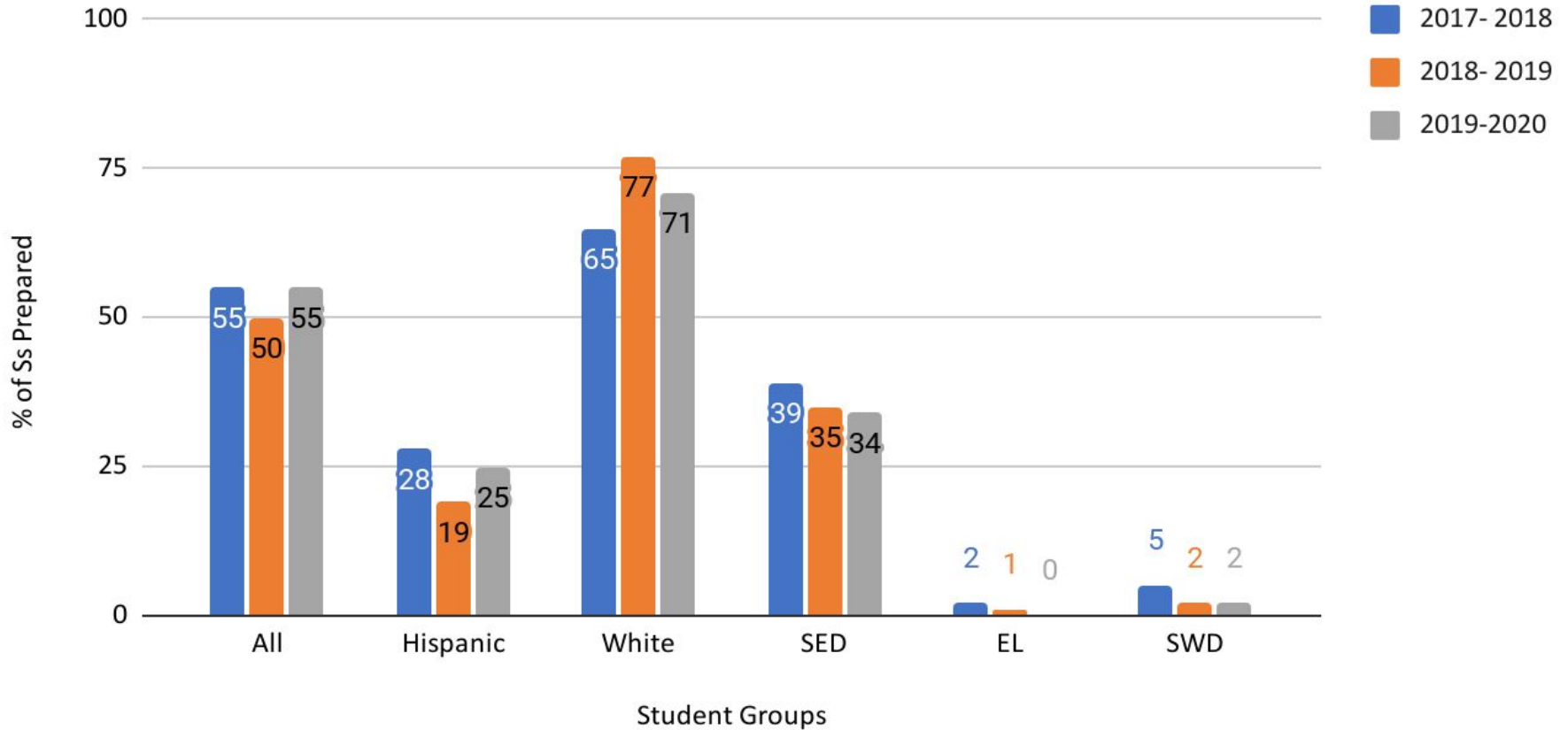
Our educational system is the
promise keeper.

-Doug Reeves

In TTUSD Our Goal is to Ensure...

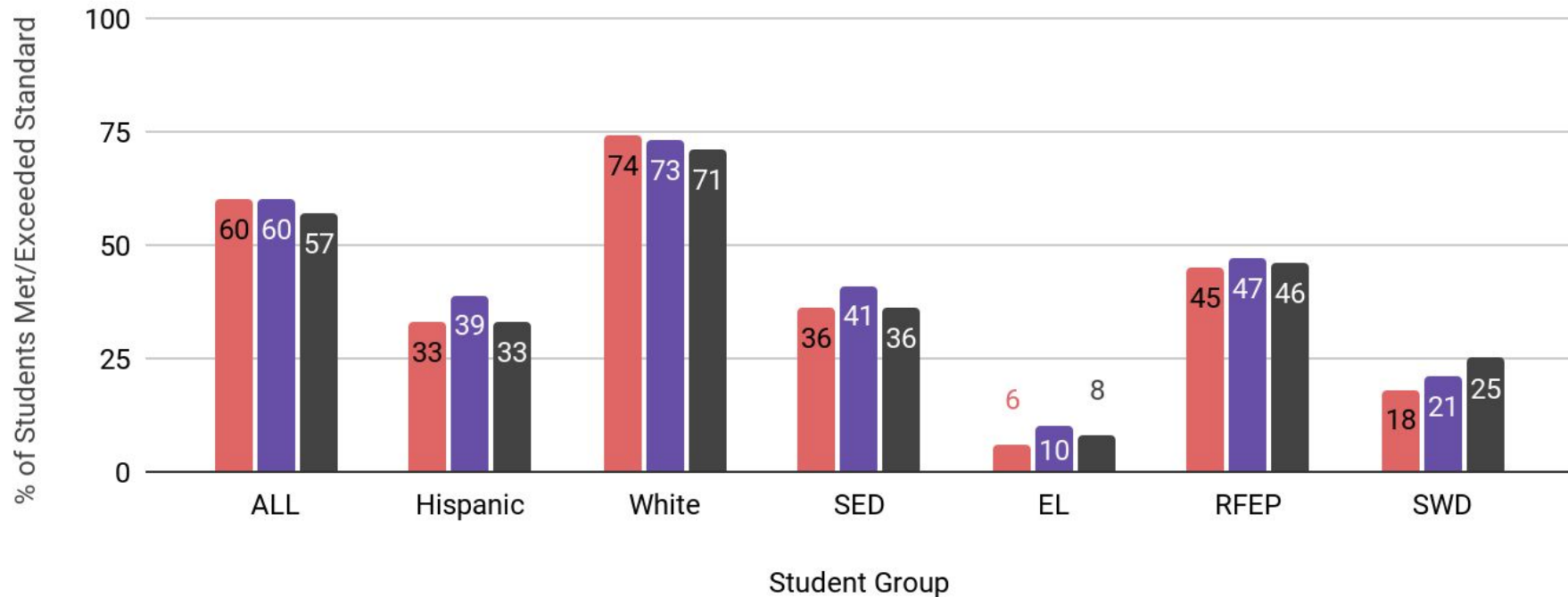
*Each TTUSD Graduate is
College, Career and Life Ready!*

College & Career Indicator: District

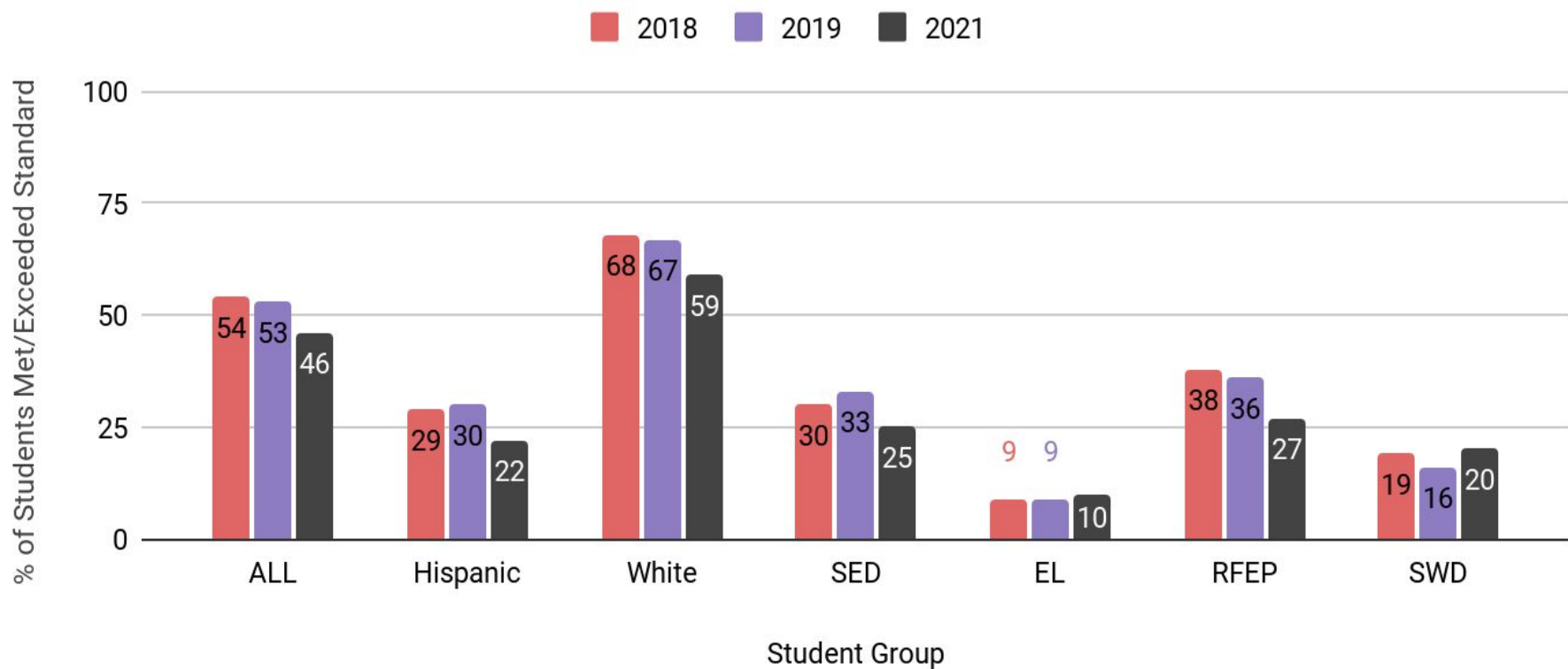


CAASPP: SBAC ELA-District

2018 2019 2021

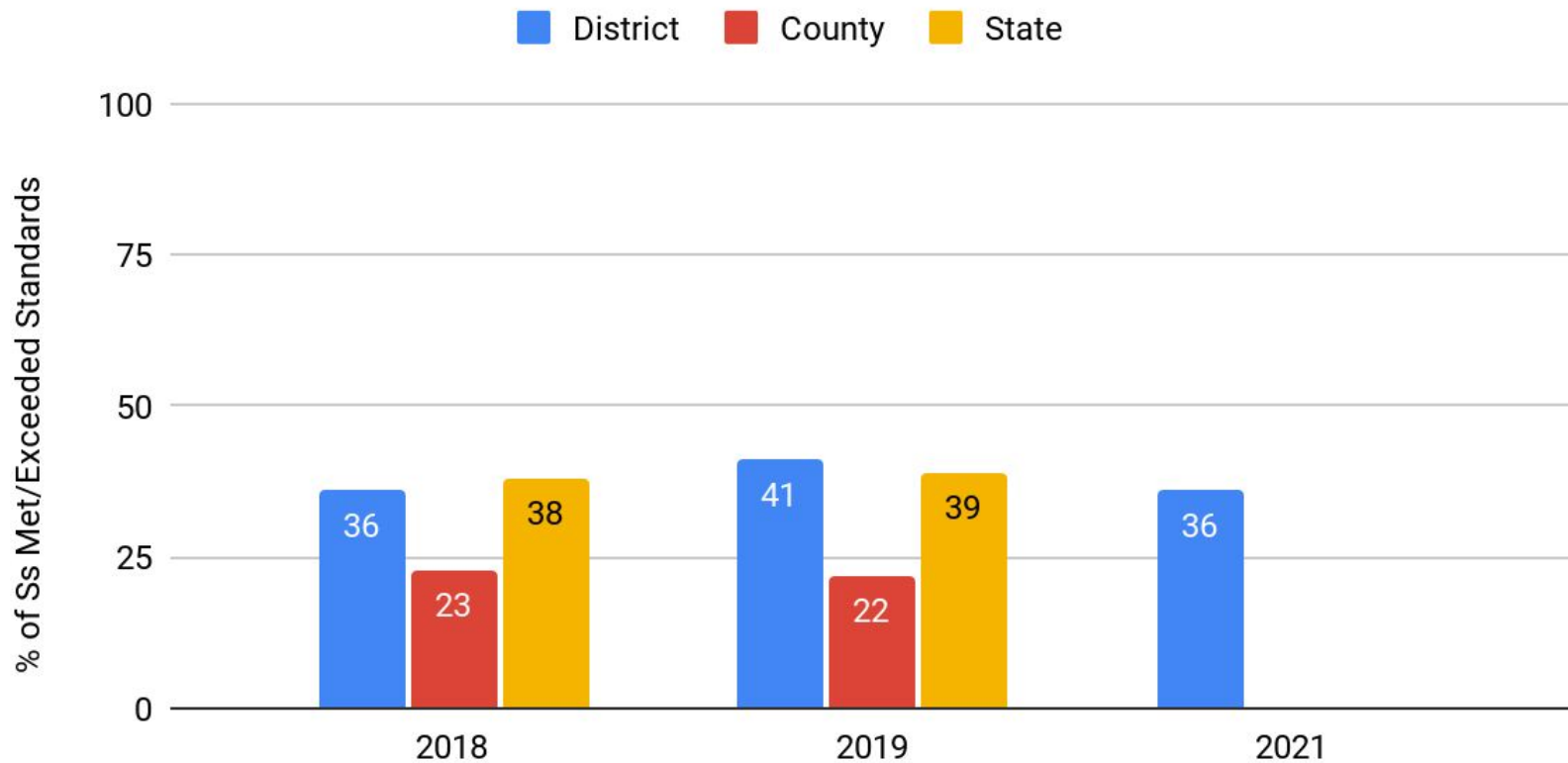


CAASPP: SBAC Math-District



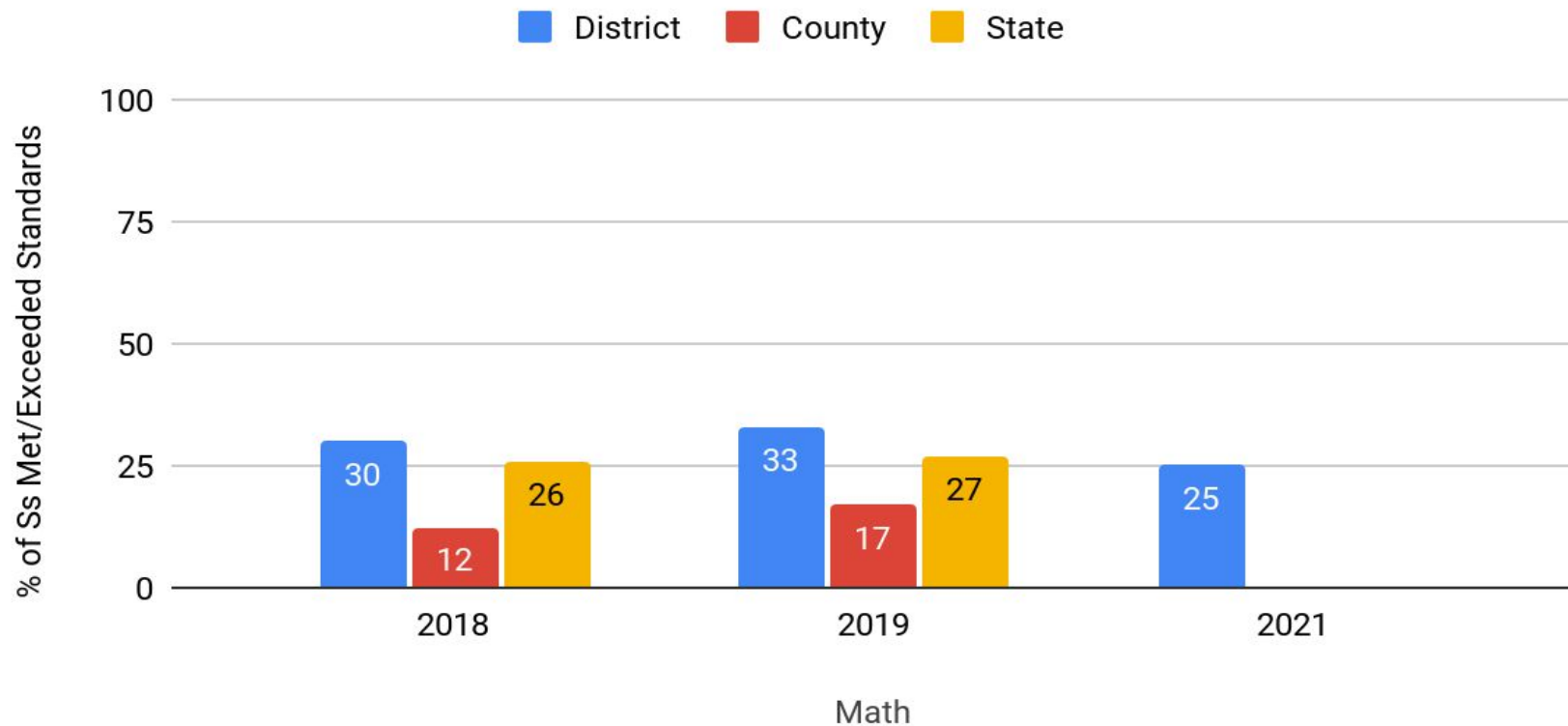
CAASPP SBAC: ELA Compared

Socioeconomically disadvantaged



CAASPP: SBAC Math Compared

Socioeconomically disadvantaged



In TTUSD, 42% of students qualify as socio-economically disadvantaged (SED)



**Create change.
Be the rising tide that
lifts all boats.**

COLLECTIVE IMPACT



How will WE as a district respond to the educational needs of each student?

WE will...

Shift instructional practices to
address the learning needs of
each student

Pre Covid... Where were we headed ?

- Marzano High Reliability Schools:
 - Levels 1, 2, 3 (and 4)
- Professional Learning Communities (PLC):
 - Senior Leadership and Instructional Coaches separately selected this area as “the focus”

And now....

LASERLIKE focus on:

HRS Level 1:

Effective Professional Learning
Community

HRS Level 2:

Effective Instruction in
Every Classroom

Professional Learning Communities

Essential Elements of an Effective PLC

School and teacher teams:

1. Gather evidence of current levels of student learning
2. Develop strategies to build on strengths and address weaknesses in student learning
3. Implement planned, research based strategies
4. Analyze the impact of the changes to discover what was effective and what was not
5. Apply new knowledge in the next cycle of continuous improvement

Essential Mindset

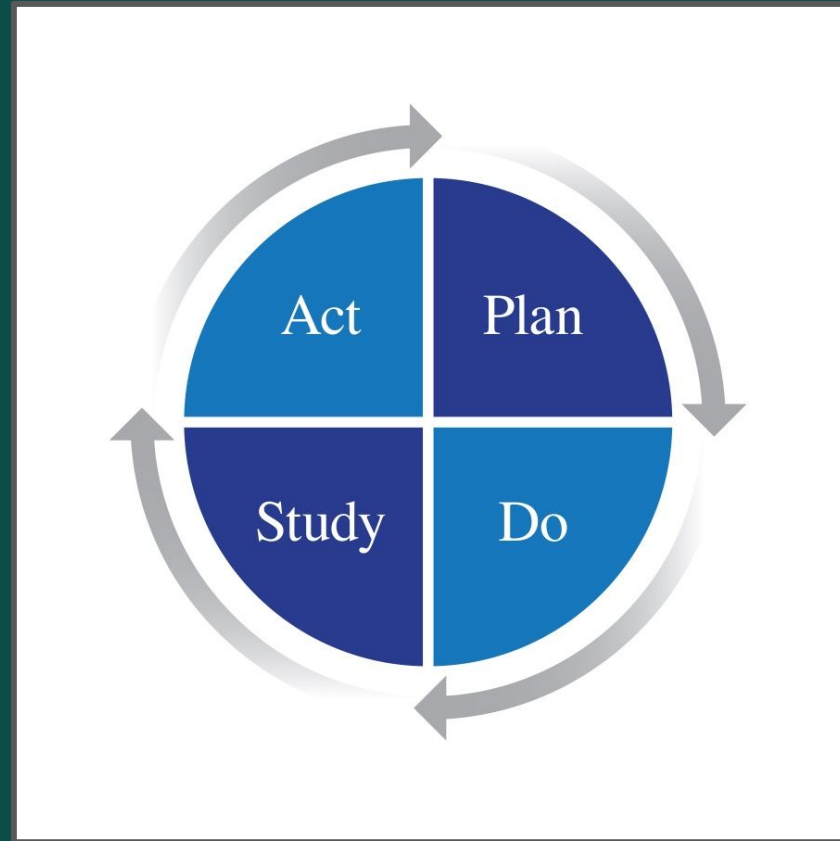
Vulnerability is foundational to accountability.

-Brene Brown

When accountability *focuses on learning* rather than blame, we can detect the critical underlying causes.

-Doug Reeves

Plan Do Study Act (PDSA) Cycle



PDSA Cycles 2021-2022

- Three Improvement Cycles
- District Instructional Leadership Team (ILT) PLC
- Alignment
 - Site PLC's
 - Reading Intervention & EL PLC's

Improvement Cycle Overview

What	Dates
Study/Plan #1	September to October 4
Do/Act #1	October 5- November 18
Study/Plan #2	November 22- December 9
Do/Act #2	January 3- March 10
Study/Plan #3	March 14-March 31
Do/Act #3	April 4-June (TBD)

Professional Learning Communities
and
Effective Instruction

Professional Learning Communities and Effective Instruction

Teachers:

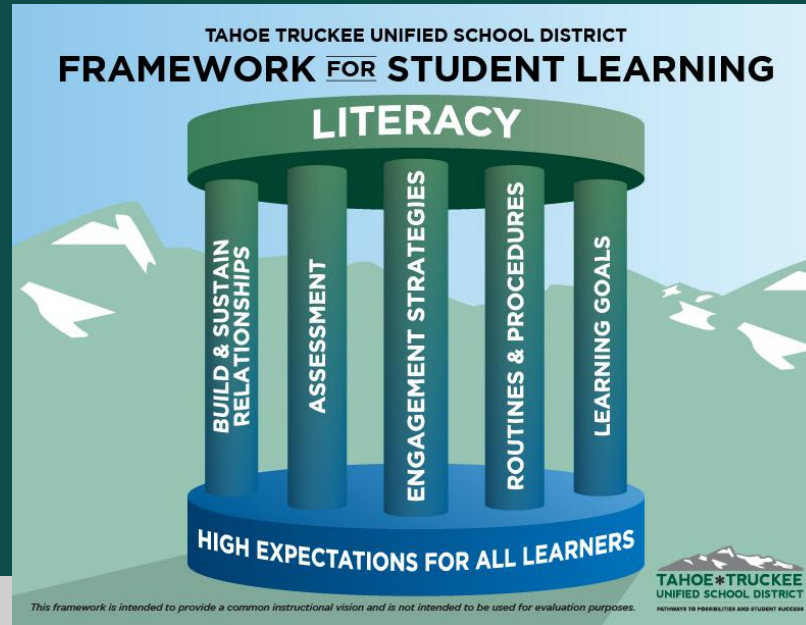
- Engage in Constructive Dialogue
- Reflect
- Learn
- Implement Effective Instruction
- Improve Student Learning

Effective Instruction is...

Reliable

Research Based

Guaranteed



Opportunities

The Path Ahead

- Culture
- Consistency
- Commitment
- Collaboration

When students fail, there is a lifetime of negative consequences for those students and for their communities.

The sense of urgency we must communicate on the deep changes required for student success is not just about a single student; it's about the lifetime of negative consequences if schools and districts fail to implement change.

-Douglas Reeves

Board Questions?